



Windows NT4 / 2000 Support for:
CID1500, CID750D, CID950N,
CAS2200, TSA3300 Software

1) Introduction

Unlike Windows 3.1, 95, and 98 the Windows NT & 2000 operating systems do not allow application programs direct access to any of the system hardware. This has prevented the above mentioned programs from functioning under Windows NT & 2000, as the operating system restricts access to the TSPC (Telephone Signal Processing Card).

This document describes a procedure that installs a kernel mode driver and related DLL files which allow the CID1500, CID750D, CID950N, CAS2200, and TSA3300 software to operate under the Windows NT & 2000 operating system. The files required for this procedure are:

File Name	Description / Purpose
Tspc.sys	Kernel mode driver for the TSPC hardware
NTsetup.bat	Batch file which updates the registry with driver settings
Tspcsys.reg	Registry entries for the kernel mode driver
AiTpscNt.dll	Interface DLL between application programs and driver
Cdrvw_31.dll	Application DLL for the CID1500/CID950N program (NT version)
Cdrvw_25.dll	Application DLL for the CID750D program (NT version)
Cdcas_10.dll	Application DLL for the CAS2200 program (NT version)
Cdtsa_10.dll	Application DLL for the TSA3300 program (NT version)

2) Installation Procedure

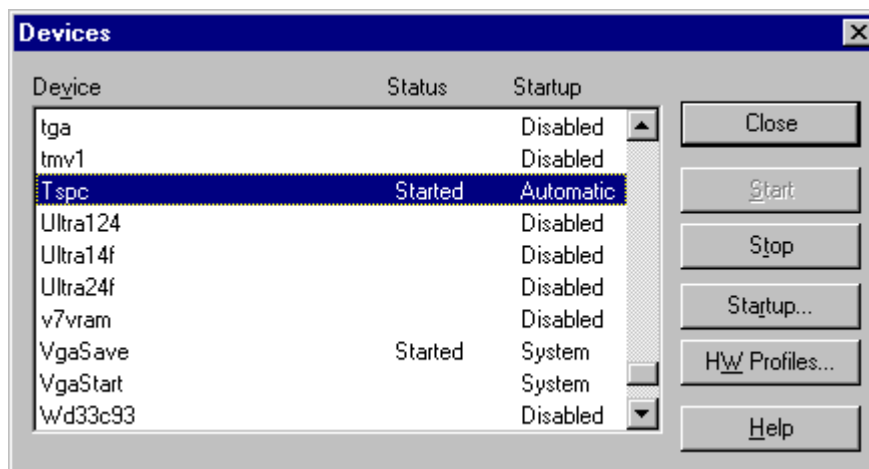
- A) Copy the Tspc.sys file to the Windows driver directory. For Windows NT, this is usually c:\winNT\system32\drivers.
- B) Copy the AiTpscNt.dll file to the Windows system 32 directory. For Windows NT, this is usually c:\winNT\system32.
- C) Execute the NTsetup.bat file. This updates the system registry with the necessary driver information.
- D) Install the desired application programs (i.e. CID1500, CID750D, CID950N, CAS2200, or TSA3300).
- E) Copy the Cdrvw_31.dll, Cdrvw_25.dll, Cdcas_10.dll, and Cdtsa_10.dll files to the Windows system directory. For Windows NT, this is usually c:\winNT\system.



Depending on which programs were installed in step D, some or all of these files will already exist in the system directory. The version of these DLL files installed in step D are designed for Windows 3.1, 95, or 98 only. In order for the application program to operate under Windows NT or 2000, they must be copied over with their NT version equivalents.

- F) Restart the computer. This is required for the TSPC driver to be loaded into the system. After re-booting, the status of the TSPC driver can be viewed by:
- a) Opening the Control Panel
 - b) Selecting the "Devices" item
 - c) Selecting the [FILE] [OPEN] menu command

This displays a window showing all the devices installed, along with their current status. If the installation of the driver was successful, the status of the Tspc device should be shown as Started.



3) Technical Support

If you encounter any problems with the above installation procedure, please contact us for technical support. We can be reached in any of the following manners:

email: techsupport@adventinst.com

telephone: (604) 944-4298

fax: (604) 944-7488

mail: Advent Instruments Inc.
111 - 1515 Broadway Street
Port Coquitlam, BC, V3B7V8
Canada

